

पहल

Prime Education Health Learning Services

educate. empower. evolve

2019



"Enter life with a vision, with a mission" - Swami Chinmayananda

About PRIME EDUCATION HEALTH LEARNING SERVICES (PEHL Services)

PEHL Services is a not-for-profit Section-8 company established in 2011, working in Maharashtra and Uttar Pradesh. **We implement Educational, Vocational and Counselling Programs for children in special circumstances and/or with special needs and Medical Relief and Rural Health projects.**

PEHL is 12AA, 80(g) and FCRA registered for the purpose of accepting donations towards its objectives.

MISSION

PEHL's mission is to reach people in difficult circumstances with social, financial, medical or physical challenges, and enable them to become contributing, productive citizens of the Indian nation.

VISION

PEHL's broad vision is to implement projects that create a healthy society by addressing issues related to education, health, nutrition, disabilities and child safety.

Registered Office:

% Niramaya Hospital, Plot 5A, Sector 4, Kharghar, Navi Mumbai - 410210

Branch Office and Address for Communication:

B28/1 Maitri Park, Sion Trombay Road, Chembur, Mumbai - 400071

Contact Details:

Email: anjana@pehl.co.in, amit@pehl.co.in

Tel: Office: (022)25207039 / Dr Amit Thadhani 9820291771 / Dr Anjana Thadhani 9820304802 / Ms Nidhi Khatu 7021209526

Website: www.pehlindia.org

Auditors:

S D Medadkar & Co

15 Orbit Heights Tower, 1st floor "C" Wing, JD Road, Nana Chowk, Mumbai - 400007

DIRECTORS

Dr. Anjana Thadhani

Dr. Anjana Thadhani is a Developmental Paediatrician specialising in academic, behavioural and growth problems in children. She practises in Mumbai and Navi Mumbai, and has been working at the Learning Disability Clinic, KEM Hospital, Mumbai from 2010 till date. She earlier worked at Learning Disability Clinic, LTMGH, Sion Mumbai, from 2000 to 2010.



She conducts numerous training programs for teachers, paediatricians, students and caregivers on these issues and has national and international publications on academic issues in children. She has also authored chapters in books on these subjects and has co-edited a textbook on developmental pediatrics. She is currently Vice President of the Growth Development and Behavioural Paediatrics (GDBP) Chapter of the Indian Academy of Paediatrics (IAP).

She is an active volunteer for medical camps conducted by the Chinmaya Mission in tribal areas of Gujarat, and those organised by PEHL Services in three districts of Maharashtra. She is a nature lover and avid birdwatcher.

Dr. Amit Thadhani

Dr. Amit Thadhani is a consulting General Surgeon practising in Mumbai and Navi Mumbai. His fields of interest are minimal access surgery including basic and advanced laparoscopy and gastrointestinal endoscopy, and he has pioneered several minimal access procedures in India.



He is currently the President, Indian Medical Association Chembur and is a Founder Member of AMASI (Association of Minimal Access Surgeons of India). He has led teams for several medical camps in disaster-hit areas, including Uttarakhand following the Kedarnath tragedy of 2013, Earthquake Relief following 2015 Nepal quake and the 2015 Chennai and 2018 Kerala floods - a total of over 10,000 people in disaster-hit areas have been treated by the PEHL team led by Dr Thadhani in the past six years.

He is also an advocate for reforms needed to raise the medical profession to its former glory, and transparency and good communication in medical practice. His love for nature and nation has led to road journeys almost across the entire length and breadth of the country, and he is an avid trekker, marathoner and musician.

Dr. Madhuri Kulkarni

Dr. Madhuri Kulkarni has been a Former Dean-in-Charge, Professor and Head of Department of Pediatrics at L.T.M. Medical College and L.T.M.G. Hospital, Mumbai and is presently Head of Department of Pediatrics at Mumbai Port Trust Hospital, Mumbai. She had completed her graduation in Medicine and post-graduation in Pediatrics at Seth G. S. Medical College. She has delivered many lectures, and presented papers in both national and international conferences.

She has been a guide to postgraduate M.D. and D.N.B. Pediatrics students, while also reviewing publications such as Indian Pediatrics, Indian Journal of Pediatrics, and Pediatric Clinics of India.

Dr. Kulkarni underwent training in 'Munich Developmental Testing' and 'Vojta's Kinesiology' to evaluate infants at risk of developmental disorders. In 1992 she was awarded an international scholarship at the Cleveland Clinic Foundation, Cleveland, USA.

She is also trained in pediatric neurology at the Hospital for Sick Children, Toronto, Canada. In 2003 she was awarded the Fogarty scholarship in pediatric HIV at the New York School of Medicine. She has been one of the first few medical teachers to train undergraduate students in WHO-UNICEF IMNCI strategy at its inception in India. At the L.T.M.G. Hospital, Dr. Kulkarni started the Early Intervention Clinic for developmentally subnormal children in 1985, the Pediatric Neurology Clinic in 1992, and the Learning Disability Clinic in 1996.



Mr. Shalin Bhagat

Shalin Bhagat is a Pranic Healer, Senior Pranic Healing trainer, Pranic Fengshui consultant also a Businessman who works in the fields of Aroma Incense and Oils. He started his journey of Pranic Healing in 1997 and was fortunate to get trained under his Beloved Guru Grand Master Choa Kok Sui for all higher courses, started teaching in Mumbai since 1998 and extended his journey of teaching in Jaipur from 2004 and in Kenya from the same year.

With his unique ability of teachings, he has won students hearts and many were nurtured, trained and encouraged to become Full time Healers and Trainers.

Mr Bhagat is also deeply involved in social welfare activities such as collection and distribution of blankets, food materials and other needed resources both in times of disaster, and routinely for pavement-dwellers of Mumbai.



ADVISORY BOARD

Dr Sunita Shanbhag

Sunita Shanbhag is Professor, Department of Community Medicine, Seth G. S. Medical College and KEM Hospital, Parel, Mumbai. A recipient of the Nari Shakti Puraskar awarded by the Savatribai Phule Gender resource centre, Sunita Shanbhag has over 3 decades of experience that includes 20 years at the Department of Preventive Social Medicine, Lokmanya Tilak Municipal Hospital, Sion. Sunita Shanbhag has been closely associated with street children for several years and has extensive experience in the area of HIV, drug addiction etc. She has been on the Editorial Board of the Indian Journal of Community Medicine, a Regional

Consultant for Community Based Nutritional intervention , Convener of the HIV/AIDS Committee for IMA Mumbai branch, Scientific Committee member of Staff and Research Society Lokmanya Tilak Municipal Medical College, Core Committee Member for Aids Awareness in Junior Colleges, Member of Mother and Child Friendly initiative and Consultant for the state of Maharashtra on Integrated Disease Surveillance in India.



Mrs. Chitra Pandeya

Chitra Pandeya has had a career span of 32 years, bulk of it has been in the area of Banking. An industry veteran, she has worked with eminent Foreign and Private Banks like ANZ Grindlays Bank, HDFC Bank & YES Bank, in senior leadership positions. A Management Graduate from NMIMS, she started her career as a Product Manager for Eureka Forbes Ltd in 1986, journeyed through various assignments in Market Research, Advertising and finally into Banking. She has mentored many youngsters, who are holding senior positions today.

Chitra Pandeya has been an important member of the ICC (Internal Complaints Committee for Sexual Harassment of Women at the Workplace) and has investigated many cases successfully. She is deeply committed to social causes affecting women & children & is currently in the process of setting up her own business venture which is based on a social theme. In her spare time Chitra dabbles in some Indian classical music. She has taken a break from her career early this year, to pursue her passions.



Dr. Rajni Gwalani

Dr Gwalani, a powerhouse of charitable activities in Mumbai, passed MBBS from Gujarat University, 1976. She completed DCH from Mumbai CPS in 1978, DPH from Mumbai CPS in 1997 and FCGP from Mumbai – IMA CGP in 1999.

She was President, Lioness Club Of Chembur, 1984-85 and is a recipient of various awards at club level, district level and multiple district level including Award and Certificate from Lions International, Illinois -Chicago, USA for work in immunization.

She has won many prizes for case presentations and paper presentations at GPA Annual Conferences between 1995 and 2001. Dr Gwalani was President of IMA Chembur from 2009-10. Her special interests are Community services at personal level and as Community Chairman of GPA GB and IMA Chembur.



Dr. Subharati Ghosh

Dr Subharati Ghosh is a passionate global health services researcher specializing in disability and noncommunicable diseases across the life-course. She has several years of experience conducting health-based research in both developing and developed countries. She has been a primary investigator and co-investigator on several research projects globally. As a consultant on several national and international health-based projects of a substantial breadth of topics, she has designed, implemented and managed research projects.

Dr. Ghosh has more than 15 publications in high impact peer-reviewed journals and books included. Dr. Ghosh was awarded the National Academy of Sciences India- SCOPUS & Elsevier Young Scientist Award in Social Sciences, 2015, for her vision and contribution to Social Sciences in India.

As an enthusiastic, collaborative researcher and field practitioner, her goal is to use innovative, data and technology-driven strategies to reduce health disparities and burden of diseases globally, while harnessing locally sustainable and culturally acceptable solutions.



Dr Alpa Thakkar

Dr Alpa Thakkar is a practising family physician in Chembur, Mumbai. She has been deeply involved with PEHL's disaster-relief activities since several years and has been a key member of the teams that travelled to Nepal, Chennai and Kerala for relief work. Dr Thakkar is also actively involved in the rural health camps conducted by PEHL in tribal areas of Maharashtra. She is a Managing Committee member of Indian Medical Association Chembur.



KEY AREAS OF ACTIVITY

Education:

- Supporting individual children for higher education,
- Supplementary education in 6 destitute homes.

Child Safety Program :

- Workshops at schools, Destitute homes, Community for creating awareness about child abuse.

Children with special needs :

- Running special needs centre at Mumbai and Lucknow
- Awareness program at school & communities

Health :

- Rural health and nutrition projects
- Medical relief in Calamities
- Health in poor urban communities & destitute homes
- School Health.

Community Projects & Livelihood:

- Self Help Groups at community level and helping them with promotional and qualitative issues.
- We also look into their account updation, registration process and other formalities with the relevant authorities.



EDUCATION, changing the world one child at a time.....

At PEHL, We believe that education is the key to a better future. We are supporting education of **500 underprivileged children** at state-run destitute homes.



Need for Educational support

- The standard of education at local municipal schools is very poor with respect to both infrastructure, resources & learning.
- Drop in reading levels of at least two years in more than 40% in the all India, while in Maharashtra there is a much more significant drop of 12% seen in the similar category.
- Reading levels are significantly lower in government-run schools than private schools.
- The children we are working with are socially disadvantaged and attending a municipal vernacular medium school.
- Our experience shows that 30% of children in 6th grade are at alphabet-recognition reading levels and more than 70% are unable to read their school textbooks.



Most of the children in our projects come from disadvantaged background with broken families and have undergone severe mental and emotional trauma. There is loss of trust and lack of discipline. They live in harsh environment and may go through punitive treatment by the not so considerate caregivers. They have no plan for future and need support.

EDUCATIONAL PROJECTS : Our team of dedicated teachers has been working with these children at 6 State run homes for destitute and orphan children.

1. Bal Kalyan Nagari, Mankhurd, Mumbai
2. Chembur Childrens Home, Mankhurd, Mumbai
3. New Observation Home, Mankhurd, Mumbai
4. Additional Observation Home, Mankhurd, Mumbai
5. Bal Grah, Mohaan Road, Lucknow
6. Rajkiya Balika Grah, Motinagar, Lucknow

BAL KALYAN NAGARI, MANHURD, MUMBAI.

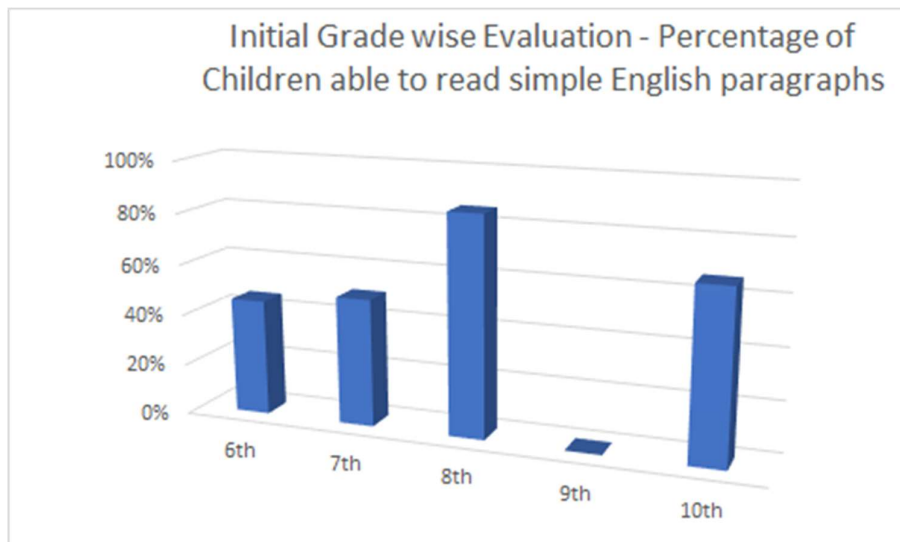
Govt run Orphanage for Children in need of care and protection (CNCP) with facilities for 200 boys and 200 girls. The home provides Residential Care, Medical and Paramedical Services. The children undergo Formal Education and Vocational Training.

PEHL has been working in this home since 2012. PEHL gives academic support to children from classes VI to X through an interactive audio-visual approach. This approach helps the children not only to strengthen their basic concepts but also increases their interest in the classes and hence encourages them to attend these sessions regularly.

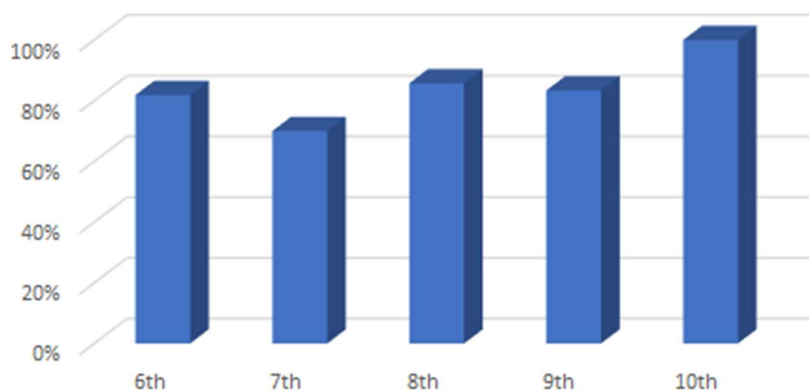
Our staff consists of 5 highly motivated full-time teachers along with an additional 4 part time teachers (recruited this year). The teachers ensure that each child under their care receives individual attention during their classes, helping them grasp concepts better and be more engaged during the sessions. Innovative methodology with more interactive and activity-oriented approach is being utilized to help strengthen their basic concepts, increase class attendance, motivation and perform better. PEHL has also incorporated audio-visual support and **“Smart Class”** in the Supplementary Education program.



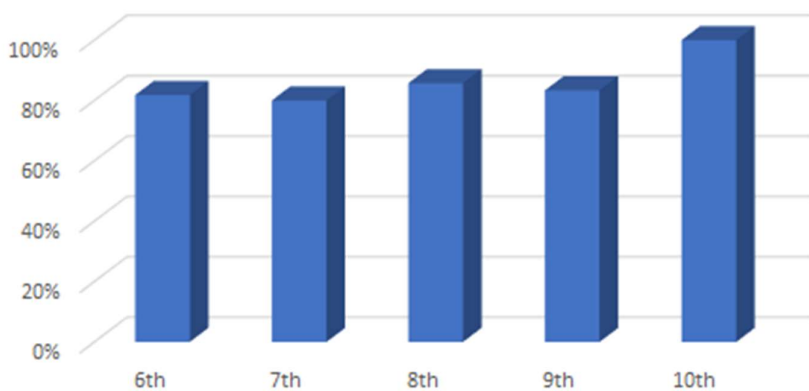
The focus of the teachers was also on guiding the children about writing answers in examination for the 10th standard students. The children were given Open test to practice writing the question papers. Each answer sheet was discussed with the individual child and the errors were analyzed. Revision of the various concepts as per the child was done. Many tips about writing the examination papers were practiced with the children. Counselor played a major role in motivating the children throughout the year by individual and group sessions.

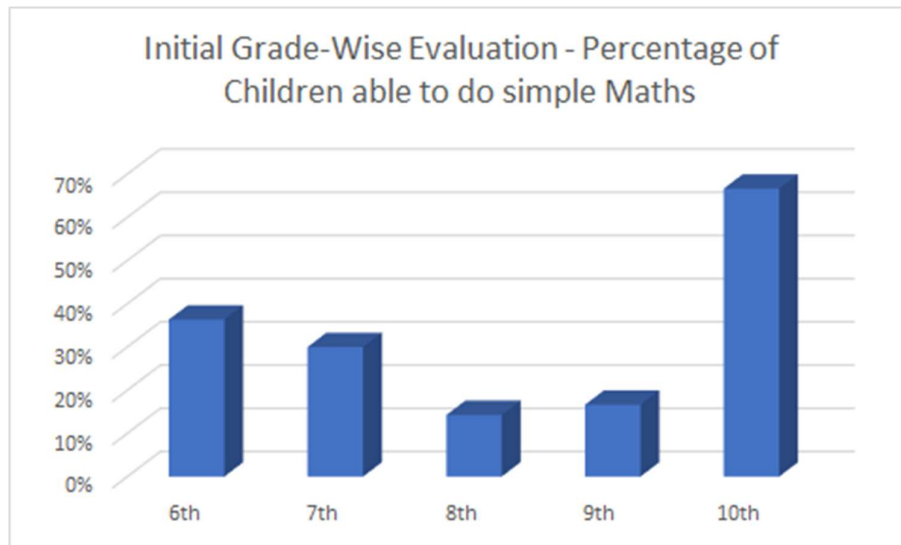


Initial Grade Wise Evaluation - Percentage of Children able to read simple Marathi paragraphs



Initial Grade Wise Evaluation - Percentage of Children able to read simple Hindi paragraphs

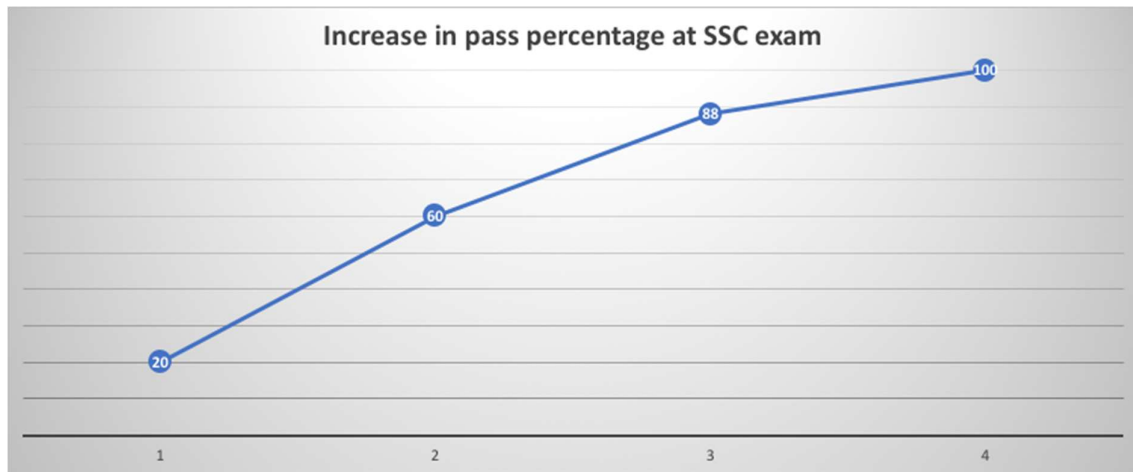




Impact assessments are conducted to map the effectiveness of the classes.

- Serial assessments were carried out for the children in various subjects. Multiple class tests were conducted throughout the year in each subject .
- The **punctuality and regularity** of children has improved from **40% to above 80%** per our attendance records.
- The **academic performance** for the children was considered as 50% and the results were analysed per class per subjects and on an average an **improvement of 15-20%** has been noted across all classes.
- Fine balance between curricular & co-curricular activities with **more than 90% of children participation in co-curricular activities.**
- Counseling immensely helped to keep children motivated in studies as well as avoid dropouts.
- Most of the problem areas showed improved however there is need for regular counselling sessions to provide sustained support to the children.

Through our support, the children have secured 100% results in the 10th Board Exams this year. The impact of our educational services is evident from 100% pass result of Bal Kalyan Nagari children who appeared for the SSC Board Examination in 2019, compared to just 20% pass result in 2016 before PEHL started working with the children.



CHEMBUR CHILDREN'S HOME, MANKHURD, MUMBAI (CCH)

This year, Prime Education Health Learning Services (PEHL) has started providing supplementary education services to The Chembur Children's Home Mankhurd for the children of classes VII to X.

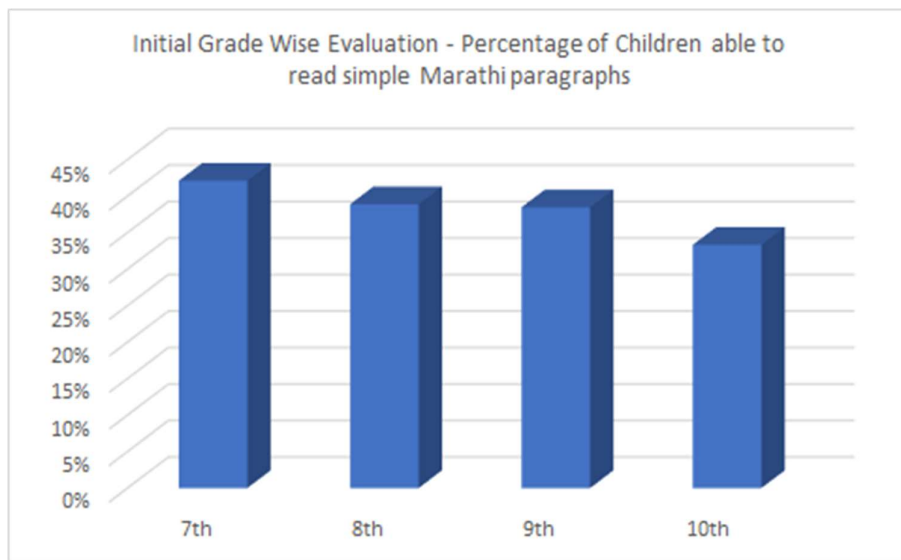
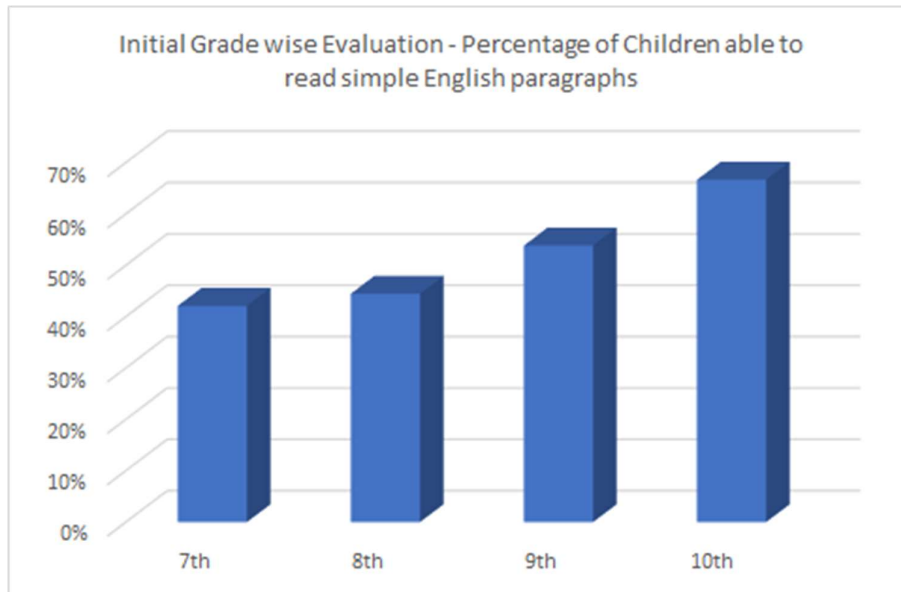
This institution under the Children Aid Society is meant for the benefit of children who are victims of natural calamity, social apathy, and death of parents. This institution has facilities for 200 boys between the age of 6-18 years. Owing to one or a combination of socio-economic factors, and for no fault on their own part, when children are down in the dumps, Chembur Children's Home tries to provide them child friendly services such as :

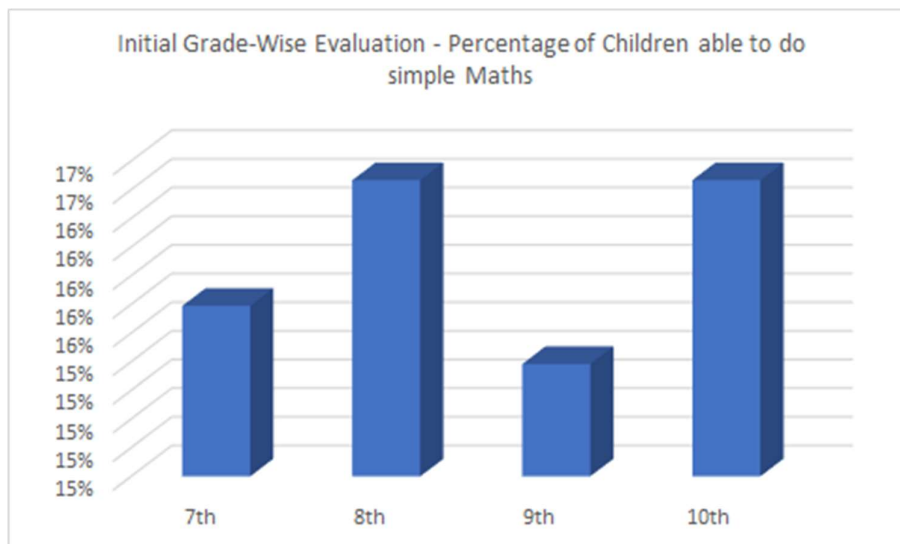
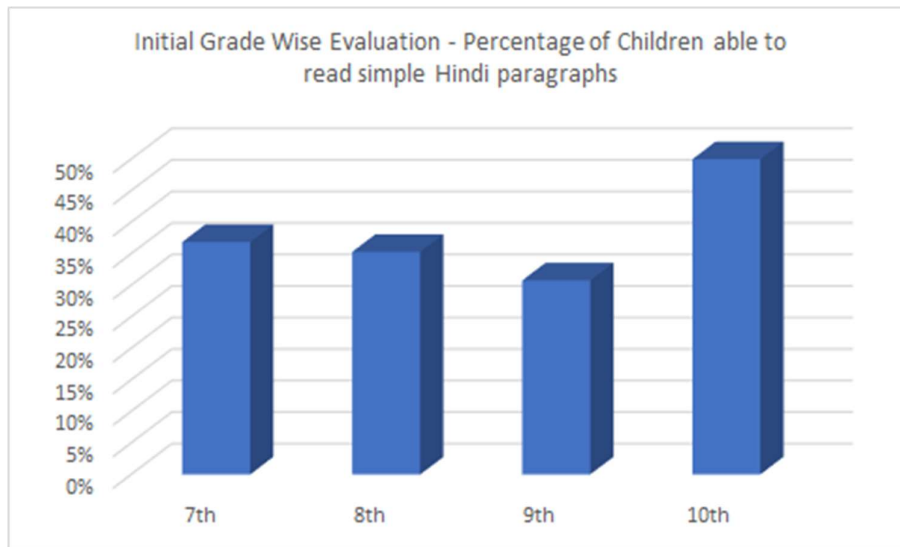
- Residential Care, Medical and Paramedical Services.
- Formal Education and Vocational Training.
- Case Work Practice, Counseling and Guidance.
- Opportunities for Development of Character and Personality through games and recreational programmes

Target Group

Our team of dedicated teachers is working with 75 children at Chembur Children Home, Mankhurd (Mumbai) for standard 7th to 10th. The children in this home are basically from a very disadvantaged background. The home has 150 children ranging in the age group of 6 to 16 years. Childrens Aid Society has multiple homes for children and adolescents across Mumbai. Children at Chembur Children Home belong to the category of Children in need of care and protection. Most of them either are orphan or have a single parent belonging to low socio-economic strata who are unable to support the child. Most children have at least a distant relative back in the community.

The standard of education at local municipal schools is very poor with respect to both infrastructure, resources & learning outcomes. The current level of education here is very poor and many children can read a few words only. The teachers at PEHL started with ASER tests to know about their levels. We have started teaching them from basics. We are facilitating a better educational base for these children with our dedicated five full time teachers.





Counselor's Initial report

Besides very poor reading and maths skills these children display extreme behaviors. Our counselor do classroom observation, talk to the teachers at School as well as PEHL Based on the detailed feedback by caregivers and PEHL teachers and interaction, the counselor enumerated the challenges.

Challenges observed by the counsellor:

- Lack of interest – engaged into other activities than paying attention in the class
- Discipline – do not obey rules, require time management
- Motivation – not attending class, no completion of homework or task given by the teacher
- Responsibilities – don't carry study material or stationary items (pen, pencil, eraser)
- Moral values – Lack of respect, obedience, honesty, gratitude. They are non-adjusting and non-compromising behaviour.
- Aggressive Behavior

- Disruptive Behavior
- Inattentiveness
- Back-answering behaviour during class
- Sleeping during class
- Walking out during the class
- Constantly asking for water breaks
- Hyperactivity during class usually roaming during class
- Incongruent behaviour between school, class and home

Caregivers feedback:

- Leaving premises without permission
- Disinterest in studies
- Lack cleanliness
- Seniors behave authoritatively with juniors
- Some kids are involved into stealing
- Back-answering

PEHL teacher feedback:

- Not interested in studies
- Not interested in class
- Inattentive
- Disruptive
- Some students face language barrier

Individual and group sessions are conducted to minimize disruptions in the classroom and help the children cope up with their stress in a more positive manner.

ADDITIONAL OBSERVATION HOME & NEW OBSERVATION HOME, MANKHURD

About Additional Observation Home

The Home has facilities for boys in the age group of 5 to 12 years. The children here are run away children, victim children, child beggars, rescued child labor etc. These children are brought to this home by Police or NGO and then admitted as per the Juvenile Justice [care and protection] Amendment Act. 2006 on the order of Child Welfare Committee (CWC). The cases are assigned to Probation Officers for investigation and further follow-up. The capacity of this home stands at 200 boys.

About New Additional Observation Home

Formal education, protection as well as freedom within certain parameters are provided to girls in the age group of 3 to 12 years and boys below 5 years, in this Home. The child population consists of orphans and those from broken homes brought by police/NGO or admitted on application by parents or relations. A noteworthy feature of this Home is that it takes complete care of the children of under trails and convicts undergoing a prison term. The social rehabilitation of children back in the community is the ultimate aim - the work doesn't end even if it takes years of perseverance and follow up. The Home has facilities for 150 children.

In these two centers, PEHL supports these children and caters to emotional and educational needs. Beyond classes, there is a constant need to counsel these children since most of them have undergone emotional and psychological trauma.

Along with the activity-oriented approach, the teachers conduct classes in Hindi, helping the children learn basics such as alphabets and numbers. Further baseline assessments are conducted with every new batch of children, to ascertain the level of intervention required before the daily and periodic schedules are made. Lastly, fortnightly evaluations are done to ensure all children are coping with the classes at similar levels.

It is very difficult to teach as the students as they follow different languages. It takes lot of time for a new students to settle down so the learning process becomes slow. The students are not able to concentrate for a long duration. Our teachers take lot of efforts to face these challenges to bring them to the classroom level teaching.

Extracurricular activities are very essential to keep the students occupied. We celebrate important days such as Independence day and festivals such as Ganesh Chaturthi, Navratri and Diwali with the children, during which the students portray their talents in drama, arts, crafts and other fields.

Story time keeps the students engrossed. The teachers show them videos of various popular tales such as Cinderella, Lalachi kutta, Jadui talaba etc and event-based movies such as Khushiyon ki Diwali, Diwali ki dhoom and Diwali ki kahani on the Diwali festival. Students also love to play Indoor games like Carrom and Antakshari related to alphabet and letters with our teachers and counsellors.

Intervention of PEHL is crucial for improving learning outcomes in these children so that when they move out they are able to adapt to the new surroundings.

RAJKIYE BAL GRAH, MOHAAN ROAD, LUCKNOW

About Rajkiye Bal Grah, Mohaan road

PEHL Services team of dedicated teachers has been working with children at State run homes for destitute and orphan children at RajkiyeBal Grah, Mohaan Road, Lucknow. This home has residential facilities for around 150 boys. These are children in care of need and protection as per JJ Act. Most of these children come from varied background usually street children, child labor and parents are in jail.

RAJKIYA BALIKA GRAH, MOTI NAGAR, LUCKNOW

About Rajkiya Balika Grah, Moti nagar

PEHL Services team of dedicated teachers has been working with children at State run homes for destitute and orphan girls at Lucknow. This home has residential facilities for around 150 girls. These are children in care of need and protection as per JJ Act. Most of these children come from varied background usually street children, child labour and parents are in jail.

Our teachers have been providing Supplementary Education, Counseling and emotional support, celebrating events and festivals and other activities. Interactive and activity-oriented approach is utilized to help strengthen their basic concepts, increase attendance, show more interest in class and perform better.

CHILD ABUSE AWARENESS

According to a UNICEF report, in India, two out of every three children are physically abused. 53% of children have reported having faced one or more forms of sexual abuse. Every second child has reported to have been a victim of emotional abuse. About 70% of the abused children do not report the matter to anyone. The gravity of the situation demands that the issue of child abuse be paid attention to and well-directed initiatives be taken to protect and empower the children. Our **Child Safety Program** is a comprehensive module, which trains parents, teachers as well as students for identification, reporting and action on child abuse.

Highlights:

- Reached out to over 3000 children across 3 states in underprivileged schools and destitute homes in Mumbai and Lucknow.
- Programs conducted in three languages – Hindi, English and Marathi.
- Separate programs conducted for parents, caregivers, teachers and support staff to enable recognition of child abuse and formulate protocols for response
- Training of Childline Volunteers on handling children with special needs like hyperactivity, communication disorders and severe behavioural problems, identification of child abuse among children in special circumstances.
- Conducted numerous workshops in community for creating awareness in community about this menace
- PEHL also partners with Kendriya Vidyalaya Sangathan to assist in final inquiry of child abuse cases across the schools run by sangathan in west zone. PEHL has also assisted in resolution of such cases in other schools in Mumbai also. Several meetings with all stakeholders and appropriate legal action is suggested during such inquiries.



DISABILITY

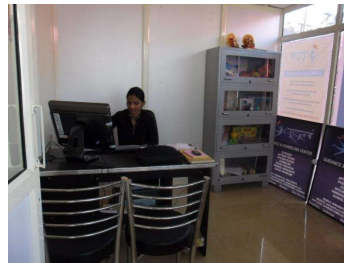
Child Development Clinic

A Development clinic is run by PEHL at Lucknow since 2011 and provides consultation, evaluation, testing and intervention for all developmental disabilities. More than 800 children have benefitted from this clinic. The clinic is run by a Developmental Pediatrician, Physiotherapist, Occupational Therapist & Speech Therapist.



Awareness programs

We have reached out to about 3000 teachers and 25000 students in 30 schools with regard to childhood disabilities. Several programs and workshops are being conducted in and around Lucknow. The awareness programs are conducted free of cost. These programs were well received and appreciated. PEHL has also collaborated with Pediatricians in Lucknow & UP for creating awareness for the developmental disorders through various lectures, CMEs and workshops. Regular workshops and lectures are conducted at Mumbai also.



MEDICAL RELIEF IN DISASTER-HIT AREAS

Uttarakhand - Kedarnath Floods (2011)

PEHL Services led two teams to the flood affected areas, treating 650 patients in the first series of camps in affected areas around Guptkashi and Uttarkashi and another 2500 patients in the second series of camps in Laksar district.



Nepal Quake (2015)

PEHL conducted extensive quake medical relief work at Nepal with a 25-member team, along with relief medicines worth several lakhs. This was probably one of the most comprehensive teams of doctors headed for relief work with physicians, general and orthopaedic surgeons, pediatricians and a psychiatrist along with two support personnel. We treated over 3000 patients over a period of nearly three weeks in the worst affected Sindhupalchowk district.



Chennai Flood Relief (2015)

Following the severe and unprecedented floods that caused massive destruction and loss of life and property in Tamil Nadu in December 2015, PEHL Services conducted a series of medical relief camps in and around Chennai and Cuddalore district, treating over 2500 patients and working in tandem with several agencies.



Kerala Flood Relief (2018)



PEHL worked along with Kerala Government and other NGOs to provide medical relief to flood-hit areas such as Pattanamthitta, Chengannur, Thiruvalla, Kunnoor and Ranni, treating over 1000 patients in a week of medical camps.

RURAL HEALTH PROJECTS

PEHL provides comprehensive medical care at ten tribal village clusters in three districts of Maharashtra. We map the socio economic and health status of the villages and conduct personal interviews with the community to understand how they presently avail health services. Periodic medical camps at the villages are conducted in these villages. We also appoint two health workers in each village and conduct intensive training programs for them. Regular visits of the Project coordinator and village health care workers are being conducted. Regular follow up of the patients is advised and assisted, and further treatments organized for those identified with medical or surgical problems.



Training of Community Health Workers

Health workers are appointed in each village cluster to take care of follow up and provide proper support to the community for health issues. Multiple Training sessions are held. The overall objective of the workshop is to build the capacity of the community health worker in the health sector for improved decision-making and better management of health services.



Rural Health Camps

Periodic medical camps are conducted at each of the village clusters. This includes registration of the patients, filling up the information in the patient record card, recording their weight & height and blood group. Our doctors counsel every patient personally regarding their health-related queries and treat their existing medical conditions.

We provide medicines to the patient on the basis of requirements free of cost and organize further treatment at government or trust hospitals for those identified with conditions that need further treatment. The medical information of each person in the village is tabulated and maintained in a database to monitor the progress.



Health Talks and Community Awareness Programs

Our team conducts Health talks for villagers on various issues such as hygiene, nutrition, addiction etc. and guides them on how to register for and avail various government schemes.

Deaddiction Program

PEHL is currently running a substance abuse awareness and de-addiction program in all villages where it works, under which community programs are held for motivating people addicted to tobacco, alcohol and other noxious substances to enroll in a de-addiction program. Medications to control withdrawal are provided free of cost during the camps and patients are encouraged to stay on the medications. After overcoming their initial reluctance, we are now seeing large numbers of people register for this program. At present we support deaddiction treatment of over 75 people in tribal rural villages with counseling and medications.



URBAN COMMUNITY PROJECT

PEHL works with the urban community at Mahul, Mumbai, with focus on Health, Education and livelihood. Medical camps are conducted during the entire year along with health talks for promotion of health. Cataract patients are also supported for operations.

Support for higher education along with felicitation of bright children is done annually. A library is also maintained to promote reading in the community. Many youngsters and adults visit the library and read, borrow books & newspapers. PEHL also organises educational trips for children and adolescents.



Regular monthly talks on various topics like Banking, Waste Management, Child Abuse are being conducted for the community. Overall development of community is possible when all the people work together.

Home visits as well as visits to Bank, BMC to help community are done by our community workers.

We are also supporting the community for medical insurance through Pradhan Mantri Jeevan Jyoti Bima Yojana & Pradhan Mantri Suraksha Bima Yojana.

LIVELIHOOD

PEHL is instrumental in formation, maintenance & promotion of Self Help Groups which aim at financial independence of the community women. 4 groups are already functional and 2 more are in the registration process. All groups are actively working and our team is helping them with various possibilities about building their business. All groups are doing the same business i.e. providing snacks, food items, masala, papad etc. All females are housewives and they seem reluctant to work outside the area.



We are working on marketing by preparing pamphlet for each group with details of the item, (quantity & price) and that pamphlet would be circulated in various society notice board with the proper permission.

PEHL TEAM: LUCKNOW



RICHA SUDHIR
Coordinator / Teacher



PREETI KUMARI
Teacher



BEENA PAL
Teacher



AASTHA SRIVASTAVA
Resource Teacher

PEHL TEAM: MUMBAI



PUSHPALATA TAVATE

Coordinator &
Special Educator



PARIMAL SALUNKE

Teacher



KIRAN AVATE

Teacher



CHHAYA OVE

Teacher



JAYAM RAJAN

Senior Teacher



JYOTI PATEKAR

Coordinator



VISHAL PAWAR

Teacher



AMAR RAMTEKE

Teacher



VRITTI VAZIRANI

Counselor

RURAL HEALTH PROJECT TEAM



KAVITA OLAMBA
Health Worker



SUNANDA KONGIL
Health Worker



GOPINATH SUPE
Health Worker



YOGITA ADHAL
Health Worker



PRITI GAHALA
Health Worker



DEEPAK BIJ
Health Worker



ROSHAN KATKARI
Health Worker



ANITA KATKARI
Health Worker



BHARAT WAJHARE
Health Worker



SANGITA GHATAL
Health Worker



SARITA GHATAL
Health Worker